

EDEN PROJECT ANGLESEA
COMMUNITY
ENGAGEMENT

MINUTES

MONDAY

12 August, 2019

6.50pm – 8.00pm

Senior Citizens Club, McMillan Street, Anglesea

Facilitator: Jen Lilburn

OUTLINE OF MEETING

1. Community Engagement Feedback Report
2. Q&A with Eden Project International CEO David Harland and Landscape Architect Jane Knight
3. Next Steps

ATTENDEES

More than 150* people attended the meeting, being a mix of community members and representatives from agencies including Environment Protection Authority (EPA), Department of Jobs, Precincts and Regions (DJPR), Department of Environment, Land, Water and Planning (DELWP), Barwon Water, Surf Coast Shire (SCS), WorkSafe Victoria and Corangamite Catchment Management Authority (CCMA). A quick show of hands at the start of the meeting revealed that about 75% of the audience were local Anglesea residents.

** In addition to the above, a number of attendees did not record their name or contact details.*

These minutes were produced by Sally Chandler-Ford. We aim to provide detailed minutes that cover the key information that was provided in the meeting. However, these minutes are not intended to be a transcript of the meeting, and discussions, comments and questions have been summarised to improve the readability of this document.

Presenters were given the opportunity to review the notes relating to their item to ensure the discussion was accurately summarised, and that it details best available knowledge at the time of the meeting. Additional comments received after the meeting have been highlighted as such.



FIGURE 1

Jen Lilburn welcomed everyone to the meeting and introduced **Warren Sharp** (Anglesea and Point Henry Site Asset Manager) who showed a short video describing the Eden Project Anglesea concept (Figure 2). The video is online here: <https://youtu.be/AYNr7CZQjzs>.



FIGURE 2

1. Community Engagement Feedback Report

Warren presented a summary of the participation and findings from the community engagement process to date. Figure 3 outlines the methods used to generate community participation and the reach of these, totaling over 5,000 contacts.



FIGURE 3

Local, Melbourne-based and international media outlets were very receptive to the story (Figure 4), generating a lot of positive media exposure.



FIGURE 4

In addition to the engagement methods outlined in Figure 3, five roundtables (targeted meetings with 25 local organisations represented) and a number of key stakeholder briefings were held (Figure 5).

Roundtables & Briefings

Roundtables	Date (2019)	No. participants															
<ul style="list-style-type: none"> ▪ Attended by 49 individuals from 25 organisations. ▪ Positivity about the Eden Project Anglesea concept. ▪ A strong desire to work with Eden Project and Alcoa to contribute as the concept progresses. ▪ A focus on a number of key aspects with themes aligned with those raised in other forums 	<table border="1" style="width: 100%; border-collapse: collapse;"> <tr> <td style="padding: 2px 10px;">‘Economic’ Roundtable</td> <td style="text-align: center; padding: 2px 10px;">27 May</td> <td style="text-align: center; padding: 2px 10px;">9</td> </tr> <tr> <td style="padding: 2px 10px;">‘Community’ Roundtable</td> <td style="text-align: center; padding: 2px 10px;">27 May</td> <td style="text-align: center; padding: 2px 10px;">10</td> </tr> <tr> <td style="padding: 2px 10px;">‘Recreation’ Roundtable</td> <td style="text-align: center; padding: 2px 10px;">27 May</td> <td style="text-align: center; padding: 2px 10px;">6</td> </tr> <tr> <td style="padding: 2px 10px;">‘Environment’ Roundtable</td> <td style="text-align: center; padding: 2px 10px;">30 May</td> <td style="text-align: center; padding: 2px 10px;">14</td> </tr> <tr> <td style="padding: 2px 10px;">‘Local interest and advocacy groups’ Roundtable</td> <td style="text-align: center; padding: 2px 10px;">30 May</td> <td style="text-align: center; padding: 2px 10px;">10</td> </tr> </table>	‘Economic’ Roundtable	27 May	9	‘Community’ Roundtable	27 May	10	‘Recreation’ Roundtable	27 May	6	‘Environment’ Roundtable	30 May	14	‘Local interest and advocacy groups’ Roundtable	30 May	10	
‘Economic’ Roundtable	27 May	9															
‘Community’ Roundtable	27 May	10															
‘Recreation’ Roundtable	27 May	6															
‘Environment’ Roundtable	30 May	14															
‘Local interest and advocacy groups’ Roundtable	30 May	10															

Briefings

- Wadawurrung
- Surf Coast Shire
- G21
- Government MPs and departments

FIGURE 5

As part of the engagement activities, approximately 420 surveys were completed and feedback comments were categorised into themes, the top 10 of which are shown in Figure 8. Each issue raised in the survey was treated as a separate comment; approximately 1200 comments were received across the 420 surveys. Just over 40% of respondents mentioned traffic, roads or access, almost 35% mentioned local economy and tourism and over 30% mentioned education. Almost 35% mentioned local economy and tourism and over 30% mentioned education.

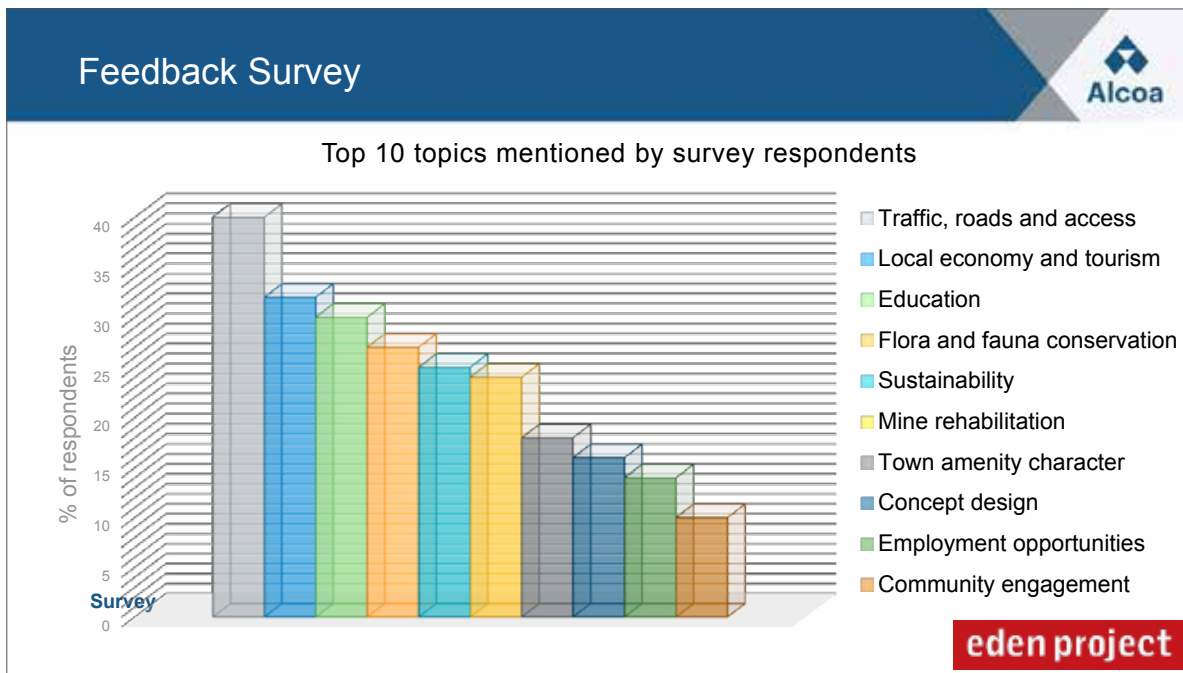


FIGURE 8

Collating all of the comments received across all of the feedback forums generated a list of overall feedback themes as outlined in Figure 9.

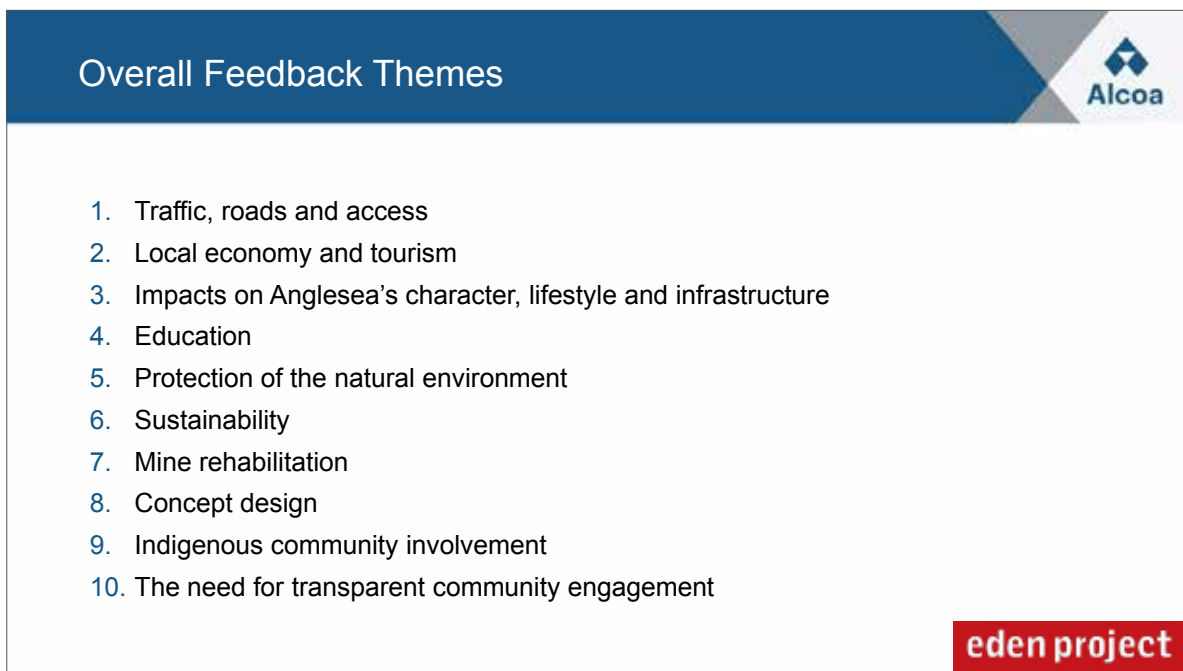
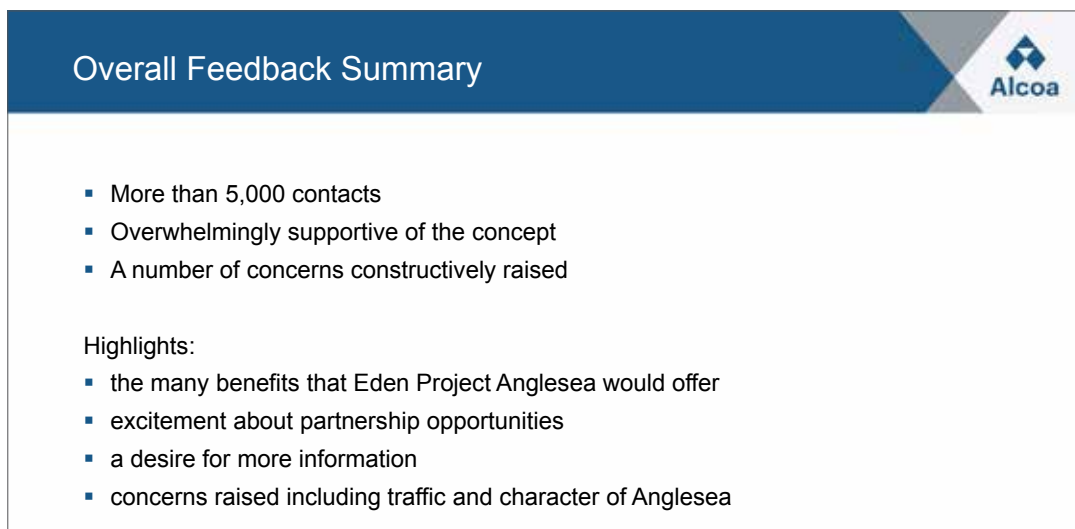


FIGURE 9

The community engagement report was completed at the end of July and is available at https://www.dropbox.com/s/pxveafyqeah5aht/eden%20project-anglesea%20concept_community%20response_july%202019_web_final.pdf?dl=0.

In summary, there was overwhelming support for the concept from the community subject to the resolution of a number of important issues, particularly regarding traffic and protection of Anglesea's character (Figure 10).



Overall Feedback Summary

- More than 5,000 contacts
- Overwhelmingly supportive of the concept
- A number of concerns constructively raised

Highlights:

- the many benefits that Eden Project Anglesea would offer
- excitement about partnership opportunities
- a desire for more information
- concerns raised including traffic and character of Anglesea

FIGURE 10

Immediately following Warren's presentation, there were 2 comments from the floor:

- *housing for employees should be referenced as a key issue*
- *all of Anglesea's ratepayers should be given a vote as to whether or not the Eden Project should proceed.*

Regarding the second point, **Cr Margot Smith** responded later in the meeting (see the section on Planning Process).

2. Q&A with Eden Project International CEO David Harland and Landscape Architect Jane Knight

Warren introduced **David Harland** (Chief Executive Officer of Eden Project International Limited) and **Jane Knight**. (Landscape Architect of Eden Project International Limited). David provided an update on the key issues that were raised by the community during the project team's visit to Anglesea in May.

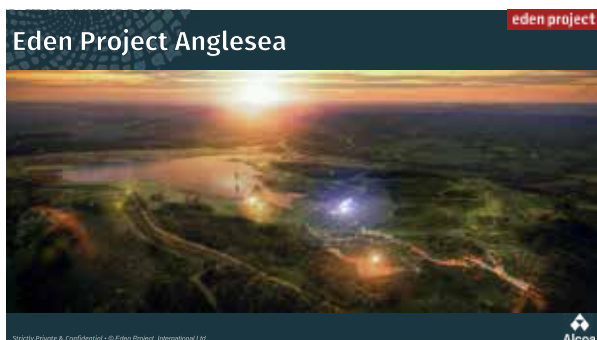


FIGURE 11



FIGURE 12

As outlined in Figure 13, the main areas that the Eden team is focused on include working with Traditional Owners, biodiversity, funding, government relations and community engagement.



FIGURE 13

As outlined in Figure 14, David advised that very positive meetings had been held with the traditional owners Wadawurrung in May and August, including an on-country experience at the mine site with Jane and the Alcoa team. The Eden Project has worked with indigenous communities in Canada and New Zealand in meeting the challenge of fusing modern scientific concepts with Traditional Owners' practices, and these conversations will continue with the Wadawurrung.

Working with Traditional Owners

- 🔸 Celebrating the cultural, spiritual and economic connection to the land
- 🔸 Building resilience
- 🔸 Co-creation
- 🔸 Employment and business opportunities

Strictly Private & Confidential • © Eden Project International Ltd

eden project

Alcoa

FIGURE 14

David advised that it is through community engagement that solutions are found to issues and problems. Engagement will continue throughout the project's development and operation. The project team has been inundated with correspondence from individuals and organisations wanting to be involved. David advocated the need for community support to assist Alcoa and the Eden Project team to drive for governmental resolution of outstanding issues, encouraging community members to let their government representatives know of their support for the project and the need for government departments to work together to resolve the complex issues in a timely manner.

David and Jane are learning a lot about the local biodiversity from local groups and individuals within the community and are keen for the Eden Project to tell the local stories, not only in the context of the coastline and the 12 Apostles, but also the biodiversity of the Anglesea Heath. Jane has been talking to local schools about the need for available resources that bring science to life to support and inspire the next generation of scientists (Figure 15).

Biodiversity

- ❖ Extraordinary biodiversity
- ❖ Indigenous flora and fauna
- ❖ Significant engagement and learning from local groups
- ❖ Developing and interpreting stories
- ❖ Science resources to support education

eden project

Alcoa

Strictly Private & Confidential • © Eden Project International Ltd

FIGURE 15

The Eden Project will cost approximately \$150 million to build and will be funded by impact investment (social investors who want to invest in social and/or environmental projects). There are investors, primarily within Australia but also from overseas, waiting for certainty on key issues, including water and planning, before they commit to funding the project. It is important not to lose momentum and credibility so it is critical that these issues are resolved within the next few months.

The Eden Project Cornwall is located in a low socio-economic region in Cornwall and was funded differently and received approximately £120 million in government capital funding. Since that injection twenty years ago, £2 billion has been returned to the local economy which represents a significant return on the original government investment.

In response to a question concerning the financial viability of Eden and its financial history, David advised that during 2012, the London Olympics resulted in a 15% downturn in UK tourist attractions outside of London. This, coupled with bad weather and a general recession, resulted in the Eden Project having to take corrective action and restructure its cost base, as businesses are required to do. This resulted in £5 million reduction from its cost base and included having to let 67 employees go. Since then, it makes an annual surplus which is reinvested into projects such as the Eden Project Anglesea.

As shown in Figure 16, the largest unresolved issue is water as, if there is no water body, the Eden Project will not proceed. A solution needs to be found to provide certainty for the project and to secure the investment. Alcoa has proposed a number of options¹, all of which come at a cost. The Eden Project is working with Alcoa and the government departments to try to resolve this issue. It believes that this project can be one of global importance and one of the top five Eden projects in the world. David advised a timeline of December 2019 for resolution on the water issue, failing which the Eden Project team will be forced to consider other sites for its next project.

David advised that the project team intends to return to Anglesea in October and in December for further community meetings.



FIGURE 16

David showed a video of the Eden Project Morecambe, located in a struggling seaside town in northwest England, which had been filmed by ITV news (one of the television main channels in the UK). The video can be found here: <https://www.itv.com/news/granada/2019-07-23/morecambes-eden-project-how-might-it-look/> The Eden Project Morecambe concept is centred on showcasing the Morecambe Bay and its biodiversity. The video includes conversations with local businesses and demonstrates the impact that such a project can have on the local economy.



FIGURE 17

1 - Alcoa Anglesea Minutes 8 August 2019, page 8

3. Next Steps

David outlined the next steps for the project (Figure 18). Aside from the continuing community engagement process and the resolution of the water issue, the other major issue requiring resolution is the planning process. Over the coming months, work will also commence on issues including traffic management, infrastructure planning, detailed design and built form etc.

eden project

Next Steps

- Share feedback from initial consultation with community
- Continue community engagement and consultation on concept

↓

- Resolution of the Mine Rehabilitation and Closure Plan water strategy
- Determination of planning authority, rezoning application process and land tenure changes

↓

- Development of detailed designs, built form, traffic, infrastructure planning etc
- Rezoning application and planning permits
- Further community engagement and feedback

Alcoa

FIGURE 18

eden project

Next Steps

www.edenprojectanglesea.com.au

Alcoa

FIGURE 19

Following David’s presentation, questions and comments were invited from meeting attendees.

Water

Questions and comments relating to water included:

- ***What is the water issue?***
- ***How can we harness the energy and enthusiasm for this project to help resolve the water issue?***
- ***Could the project still go ahead if the water body took longer to fill?***
- ***What will the role of the water body be within the project concept?***
- ***Is tapping into the aquifers a good option giving that we have been through droughts and may have more ahead. Would think that the recycled water option is a better one***

Warren explained that there is currently no agreement with the state government as to the fill strategy for the water body. It is predicted that, if left to fill naturally, the water body will take about 50 years to fill. Alcoa wishes to fill it within 5-7 years and the original proposal was to restore Salt Creek to its original course to facilitate this. Alternative options are also being explored, such as using recycled water or existing underground aquifers. There is no resolution yet with state government as to what strategy is appropriate. The key issue with the Salt Creek proposal is its compatibility with the Sustainable Diversion Limit Policy which applies to all Victorian rivers and streams. Alcoa is currently working through this issue with DELWP. The primary issue with recycled water is cost.

David advised that the best way to assist in resolving the water issue is for community members to support the project in Anglesea by either speaking or writing to DELWP and local politicians. Quite rightly, there are checks and balances that need to be sorted out but ultimately, David believes that it is a cost issue as to who pays.

The Eden Project wants to open in 2024/25, which fits with the 5-7 year filling timeframe. The Salt Creek restoration/rehabilitation would be a good story to tell as would some of the other options such as the use of recycled water. Whilst it may be possible to design something differently if the water body took longer to fill, it wouldn't have the same impact or be the story that the Eden Project wants to tell. 50 years is too long and the Eden Project thinks there is a better, more sustainable and smarter way of filling it.

Greg Woodward (DELWP) advised that DELWP is working very closely with Alcoa on the water issues. It is important not to rush a decision which may then have unacceptable environmental impacts in the future. DELWP is very aware of the Eden Project's desire to resolve the issue as quickly as possible.

Jane advised that it is not anticipated that the water body will be of sufficient quality for people to swim in but they will be encouraged to interact with it in a variety of ways, the detail of which is still under development.

Warren agreed that a very cautious approach would need to be applied if aquifers were to be considered as part of a filling solution. The Upper Eastern View Aquifer is not a drinking water aquifer. The Lower Eastern View Aquifer is a key asset for Barwon Water and they are considering potentially restarting that aquifer to supplement the available water supply for the region.

Planning process / gauging the community's support for the project

Questions and comments relating to the planning process and gauging community support for the project included:

- ***It will be impossible to get everyone's agreement on whether the project should go ahead. Who ultimately makes that decision?***
- ***Whilst there is a lot of community support, it doesn't mean that there is majority support. Will there be a process to get every resident's support/opposition to it before any approvals? There should be a vote.***
- ***Will the planning process include traffic considerations?***
- ***It is important not to leave it to the planning process to resolve issues such as housing, retail, traffic, hospitality, impacts on the broader Anglesea township and community etc.***

David advised that projects of this complexity and scale necessarily require substantial issue resolution before moving onto detailed design. At the moment, the two things that are stopping the project from moving into the more detailed design phase are water and planning, although planning is more of a process than a problem. Alcoa, as the land owner, also needs to be comfortable with both of those elements.

Warren added that, most importantly to Alcoa, the project needs to be supported by the community and if the community doesn't want the project, then it won't happen. Feedback so far, as outlined in the feedback report published last week, has indicated to Alcoa that the community is very supportive and, therefore, Alcoa will move into the next phase. Warren is confident that the water and planning issues are solvable if there is a community will for the project to proceed.

David advised that the current community engagement process has provided, and will continue to provide, a wide opportunity for people to engage in the process. The project team believes that there is overwhelming support for the concept as well as a number of concerns and issues that will require resolution. There are lots of interest groups which could use the Eden project to facilitate other things happening in the space such as the Bike Park.

Cr Margot Smith (Surf Coast Shire) added that the planning process effectively plays the same role as a 'vote' in that it facilitates the gathering of different views, objections, support etc. all the way through the process. As a community, Anglesea needs to determine when it will crystallize its support or otherwise as it would be unfair to the Eden Project and the investment they will make over the journey if it is left to the detailed plan stage before the community decides that they don't want it. Therefore, it is important that everyone participates in the planning process and gives feedback as to what they like and don't like throughout.

Warren advised that the issues of traffic, housing, retail, connectivity etc. will be worked through and solutions developed well before the formal planning process is undertaken. The planning process will test whether those issues have been resolved properly. The primary planning issue at the moment is determination as to whether the planning authority will be the state government or Surf Coast Shire. There will also be land tenure issues that will need to be worked through. Alcoa will also need to start thinking about what the Eden Project will mean for the future of the power station site. Alcoa has its Freehold Master Plan which identifies the power station site as a community hub but feedback from the community as part of the recent Eden Project discussion is that more information and discussion about the potential power station uses is required.

Visitation / impacts to Anglesea

Questions and comments relating to visitation numbers and the impacts to Anglesea included:

- ***How many visitors will the Eden project need each day to make it successful?***
- ***There seems to be a gap between what appears to be an exciting project on the mine site and consideration of the broader issues for the community***
- ***Anglesea is not a 'down at heel' town and doesn't have any problems that need to be fixed by the Eden Project. Anglesea's existing character needs to be respected as it is one of the reasons why people live here***
- ***The Eden Project doesn't need to improve or change any aspects of the town. Rather, it needs to appreciate that it could have negative impacts on the township if the issues of concern are not managed appropriately. If this is taken on board, the project could be great***
- ***There could be economic benefits to some businesses from the Eden Project***

David advised that the Eden Project Anglesea is projected to receive 750,000 visitors per year which equates to just over 2,000 visitors per day. The maximum capacity that the site can accommodate will need to be determined so if the peak is 3,500-4,000 /day, there will also be days where there are significantly less people. Numbers will need to be limited to ensure that the visitor experience is not compromised. The Eden Project team have had conversations with community members about connectivity or otherwise with Anglesea and if it doesn't consider those broader issues at the same time, the project will be seen as a failure.

David is acutely aware that there are two sides to the argument in that there are those who don't want the nature and character of Anglesea to change whilst others want a stronger link between the project and the township.

A balance will need to be found. Whilst it will be important to protect and preserve Anglesea's character, a few problems such as schooling, employment for young people and the existence of a social divide have been frequently mentioned to David and his team during conversations with individuals. The project will provide a fantastic opportunity for the town to the extent that it wants to be involved.

Financial issues

Questions and comments relating to finances included:

- ***Visitor numbers dropped off at Cornwall and there were mass redundancies, then excess land was sold off when profits went down and then the Eden Project requested £1 million from Cornwall Council.***
- ***How can the Anglesea community ensure that this does not happen here and what conditions can we put in place to ensure that it doesn't?***
- ***I will provide my reference articles to include in the Minutes.***

David advised the Eden Project has learnt lessons during their 20+ year operation in Cornwall in which they have had (mainly) good and some bad years. The Eden Project Cornwall does not receive any public sector funding and the suggestion that Cornwall Council provided funds in recent years is incorrect. The £1 million referred to (within the article) was social security type benefits paid directly to staff. As noted earlier, in 2012, the Eden Project had a bad year and had to cut some costs. It also sold a small piece of surplus land.

The Eden Project Anglesea is not asking for any public funding. Rather it will raise its funds from social impact investment and has secured that investment already. David believes they have a sustainable financial model and can be environmentally, economically and socially beneficial for the Anglesea region. The Eden Project believes that this project can be an exemplar in terms of mine rehabilitation and economic regeneration. The intention is to create more than 300 ongoing skilled jobs.

Following the meeting, the following information was provided by the community member who had raised the above financial question:

My reference document states that the Eden Project declared asset sales of 2,000,000 GBP (@\$AU3.5M) although it is not clear what all these assets were.

<https://www.bbc.com/news/uk-england-cornwall-25644254>

My research leads me to conclude that the original project was set up with \$56M from the Millennium Commission, \$25M from the South West Regional Development Agency, \$26M from EU Regional Funds, \$11.3M from the Big Lottery Fund and \$13.2M from other statutory sources. It was further reported in 2013 that the Cornwall Council had spent \$1.3M over three and a half years to fund the Eden Project. Some of the payments were left off the authority's "transparency report" which identifies public spending.

<https://www.bbc.com/news/uk-england-cornwall-25534769>

However in 2008, long before the slowdown due to the 2012 London Olympics, it was reported that the South West Regional Development Agency repaid \$1.8M of a \$3M loan to the Cornwall Council on behalf of the Eden Project. Additionally, the agency also provided \$1M for repairs. It was requested that the payments not be made public. Interestingly for local residents of Anglesea, this loan was for a bypass road of a local village.

<https://www.bbc.com/news/uk-england-cornwall-18232261>

Clearly, the Eden Project has been the recipient of a great deal of public money since its inception, and continues to apply for additional grants.

Post Meeting Response from David Harland:

This was covered within the meeting, but the community member has unfortunately confused a number of different elements of a twenty year history and merged them into one story, as opposed to considering them as separate stories. This is unfortunate, but we will now unravel them. As noted elsewhere in these notes and in all of our public presentations, the capital for Eden in Cornwall (an economically deprived area) was largely funded by the public sector, as they sought to inject economic development into Cornwall.

To be clear:

- Eden's original funding consisted of both public and private monies (i.e. bank debt) and totaled £142.7M up until the end of 2005. This is a matter of public record.
- The funding received in 2008 (11 years ago!) was a grant from SWRDA (part of which was used to repay loans to Cornwall Council, which had been used to fund the original road to Eden).
- Finally, the later reports from 2013 and 2014 are not grants to Eden, rather they largely referred to payments that had to be made by statute to employees (as covered above in the notes).

There is an undertone from the question that somehow this has been handled in a secretive way. It is also unfortunate that the community member has sought to rely on press reports, as opposed to the source documentation and merged three different stories from three different periods. We hope that this has now been clarified.

For the avoidance of doubt, Eden's finances are transparent (published each year). Eden has been the recipient of significant public sector funds over the years and subject to countless audits to verify the use of government and other public monies. Any suggestion that this is not the case would be firmly rejected.

Since the original capital investment, like all businesses, Eden has benefited from government funding and initiatives – both large and small. Eden does not require these for its ongoing viability. Again, like any business, Eden has had to both grow and constrain staff numbers and overheads to meet customer demands, as well as its own charitable objectives. In the last six years of operation, Eden has consistently made a surplus from its UK operations.

Other questions / comments

At last week's presentation, Jane stated that the built concept will not be a static presentation. Rather it will be a dynamic concept that is constantly changing. How will it relate to the tower in the water? Are the entities fixed or will they evolve over time?

David advised that, while the team is confident that there is a sizable market for this project, it will need to continually reinvent itself and refresh content to excite visitors to return. The tower concept in the water body represents the height of the landscape before mining activities commenced at the site. It is a journey through deep time with a Gondwana forest at the top. Jane added that the tower will not be seen outside of the mine. The images presented are concepts and were produced to generate excitement and stimulate conversation.

I support David's comments regarding two fantastic examples in New Zealand and Canada of working with indigenous communities and successfully integrating indigenous issues into mainstream issues and tying them into sustainability issues. If the Eden Project Anglesea does this properly, it will succeed.

Meeting attendees were invited to write down any questions or comments that they didn't wish to raise during the meeting. The following questions were asked and Alcoa/Eden have provided a post-meeting response:

- **Why does the Eden Project consider water from local creeks when the river is so badly in need of that catchment being returned?**

Response from Alcoa – The filling of the water body is Alcoa’s responsibility. Alcoa’s draft Mine Rehabilitation and Closure Plan (September 2017) proposed that the water body filling would be accelerated by restoring the ephemeral Salt Creek back along its original course into the mine void. Based on long term Salt Creek average flows the proposed fill time is approximately 5 to 7 years, and to achieve a water quality of pH 5 or better (better than background). The concept is underpinned by extensive geotechnical, geochemical and hydrological investigations and analysis that has been independently peer reviewed.

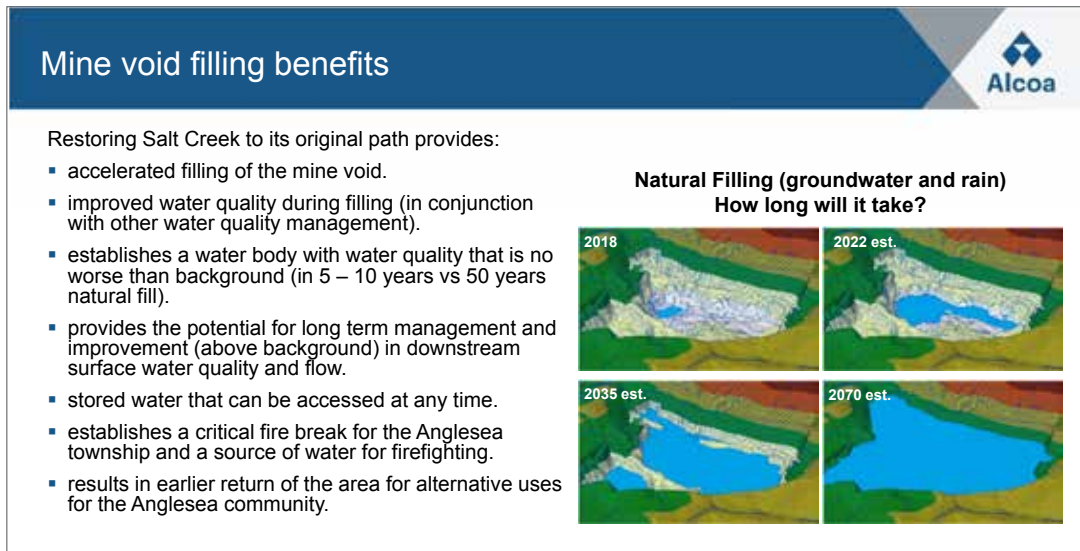


FIGURE 20 (Source: Alcoa CCN 17 June minutes)

The stored water can be accessed at any time to further support the environmental requirements of the river system. Alcoa has considered the potential impacts on the river downstream (only approximately 20% of lower Anglesea River water comes from Salt Creek) and has built a contingency into the draft Plan which can restore the existing diversion channel with 2-3 days’ notice if required. In addition, the water in the water body will continue to be available at any time for release back to the river.

- **What are the addresses of the departments to whom we should contact about water and planning?**

Response from Alcoa – The key departments - Water, Planning and Environment - within DELWP and contact details can be found on this page: <https://www2.delwp.vic.gov.au/our-department/contact-us>. The relevant ministers for the departments are: Minister Lisa Neville (Minister for Water), Minister Lily D’Ambrosio (Minister for Energy, Environment and Climate Change), Minister Richard Wynne (Minister for Planning). Contact details can be found here: <https://www.premier.vic.gov.au/the-team/>

- ***How is it that 3,000 respondents to the Eden Project is considered massive and to be taken notice of, yet 5,000 + signatures on the Bike Park petition are ignored?***

Response from Alcoa – Alcoa understands the variety of opinions regarding the Bike Park. Alcoa’s view is that there may be an alternative use for the bike park site but it does not want to see the end of the bike park. Whilst there may be an opportunity to do something else in another location, time will tell as to whether that happens or not. At this stage, Alcoa hasn’t made a decision one way or the other. However, Alcoa reserves the right to make the decision about its property in its own time. Alcoa is not different to any other private landowner. We have many factors to consider in making such a decision, not only the views of the community, but also the views of other landowners and stakeholders as well as further advice from our land planning consultants.

- ***Given the size of the project including budget and infrastructure, would it be possible for Eden Project to extend the 4-month timeline for the resolution of the issues and concerns?***

Response from Eden - The Eden Project has to work within the planning and regulatory framework that exists. So, whilst we are prepared to wait whilst that is sorted out, these projects do require momentum and we want it to progress as quickly as possible. Projects of this scale need planning and regulatory certainty and there are some outstanding conditions that are necessary for the project to move forward. Whilst we believe these issues can be dealt with, they require a will and desire from a number of people to make that happen and the team needs to see forward movement on all of those points. If it is still merely a concept in 12 months’ time, it will have failed.

Comments were:

- ***Concerned about the large numbers of visitors especially at Christmas, Easter and at other normal times, there can be absolute chaos with movement of traffic***
- ***My concern is traffic management and worry that the sealing of Messmate Track (part of the Mine Closure Plan) will present and may unduly influence proper traffic management***
- ***Great vision but a shame that so many more visitors will be coming into Anglesea***
- ***Concern regarding numbers visiting Eden Project / Anglesea per day – like Sovereign Hill in Ballarat, the Penguin Parade in Phillip Island, visitors don’t necessarily have to stay in Anglesea but commute from Melbourne for the day. Eden Project would be another excellent tourist attraction for tourists to Melbourne***
- ***You’re presenting this as an environmental project but really it’s about money – spa treatments? Boutique beers? Chefs? Seriously? You hope to inspire new generations to study science – Well, I am a scientist, wrote my thesis on the orchids of the Anglesea Heath, and I am seriously concerned about the welfare of the heath with an Eden Project. Anglesea cannot cope with the levels of tourism that is proposed – not just roads – but the natural amenity***
- ***We should engage. This would bring excitement and make Anglesea a very special place to visit and put it on the map. The Eden Project should go forward. It is an environmental hub after all.***

Note: Questions and comments that related to the site rehabilitation have been included in the August 2019 Community Consultation Network Minutes

Meeting Closed at 8:13 pm